

RETARDER PROOFING

RETARDER PROVERS ROOMS

Model: CL1/1311

Code: 48001050

PLANET

RETARDER PROOFER ROOM FOR 1 TROLLEY 600×800 WITH RAMP – Modular panel retarder proofer room complete with steam generator, 7" touch screen control panel with ventilation and humidity control in all phases, and remote Wi-Fi GEMM-Cloud supervision.

- Construction: external finish in grey PET sheet metal / internal finish in AISI 304 18/10 stainless steel lining
- Modular panels, 80 mm thick, insulation with CFC- and HCFC-free injected polyurethane foam
- Reinforced AISI 304 stainless steel drive-over floor, 60 mm thick; No. 1 trolley access ramp
- Internal capacity: no. 1 600x800 trolley
- Position of technical compartment: control panel and electrical system with front access
- Refrigeration type: "Gentle" cooling system with indirect/soft ventilation
- Control board panel: 7" TOUCH screen control board
- No. 1 hinged door, clear opening 100x197h cm (right-hand hinges); Automatically heated threshold frame and door with magnetic gasket; Internal LED lighting
- Defrosting system: automatic hot gas defrosting
- Evaporation of condensation water: automatic
- Equipment suitable for floor recess installation
- Supply with: module for connection to the GEMM-Cloud service; USB port
- Not included: trolleys





Technical Data:

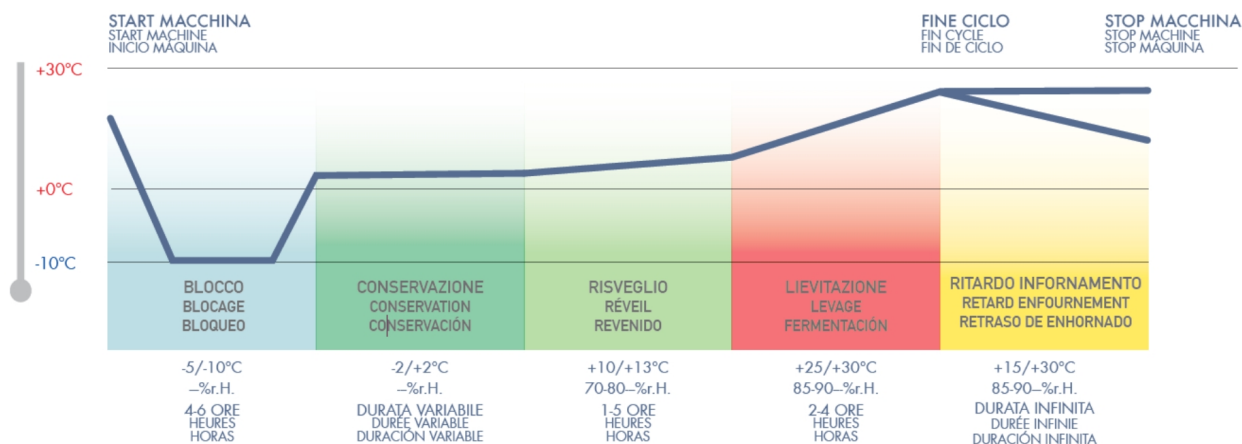
Doors	nr	1
Trolley capacity	nr	1 600x800
External dimensions (WxDxH)	cm	136 x 116 x 267 + 16
Insulation thickness	mm	80
Internal dimensions (WxDxH)	cm	100 x 90 x 197
Standard lock		YES
Standard light		YES
Temperature	°C	-10/+40°C
Condensing unit		plug-in unit
Gas		R290
Ventilation control		YES
Humidity control		YES
Relative humidity	ur%	max 90%
Max abs. power	W	1500*
Cooling power	W	1100*
Input voltage		1x230V ~ 50Hz
Climate class		5

*Evap. -10°C, Cond +45°C

FEATURES OF COOLING SYSTEM AND COMPONENTS:

CONTROL PANEL

• Programming and managing the proofing cycle is extremely easy and precise thanks to the 7" multifunction touch electronic control board. Intuitive and user-friendly, it allows you to set the phases of cooling, storage, warming, proofing, and holding, with the option to store up to 100 work programs and select from 7 languages. The electronic board ensures an ideal climate for any type of product by controlling temperature and relative humidity. It also provides immediate diagnostics through constant monitoring and display of operating parameters.



DETAILS:



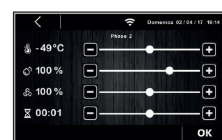
7" TOUCH electronic board



Automatic work cycle



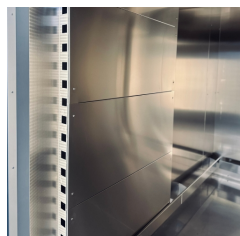
Manual work cycle



The parameter setting menu offers the possibility to adjust the temperature, humidity percentage, fan speed, and interval duration.



Electronic fans that optimize ventilation at every stage



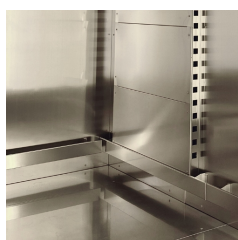
Enhanced evaporators, designed for CO2 and treated with cataphoresis to resist corrosion



High-efficiency steam boiler (steam production from 2-2.6 kg/h).



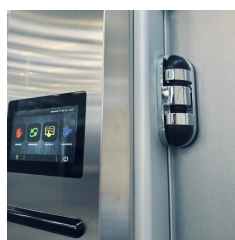
Internal lighting with LED lights



Reinforced stainless steel floor for trolleys and internal bumpers.



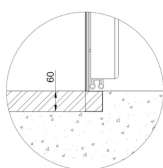
Door thickness detail



Hinge detail



Dictator for soft-closing and automatic door closure (on request).



Scheme for floor recessed installation



Remote monitoring system via GEMM-Cloud Wi-Fi connection

ACCESSORIES:



Dictator device

48002030



Glass window cm 40x40 for door (overprice)

48002040

Glass window cm 40x160 for door (overprice)

48002045

Stainless steel AISI 304 external finishing (overprice)

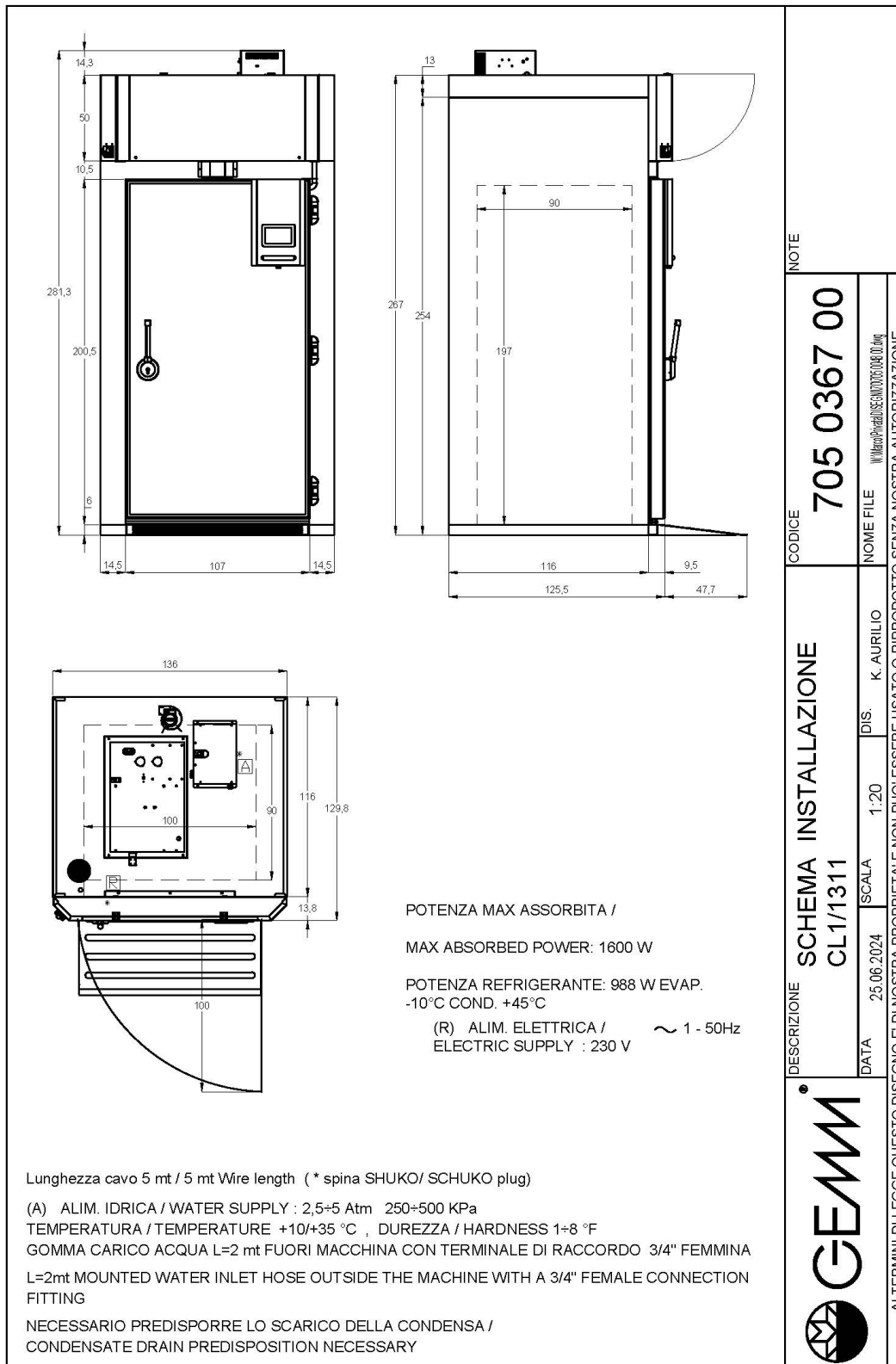
48002060



60Hz frequency

40200560

INSTALLATION DIAGRAM:



CL1/1311